

Background

The national immunisation uptake statistics, based on available data, for Quarter 3 2017 are presented in this report. These immunisation uptake statistics relate to children at 12 (born between 01/07/2016 and 30/09/2016) and 24 (born between 01/07/2015 and 30/09/2015) months of age in Quarter 3-2017. These children were recommended the vaccines outlined in table 1. The immunisation schedule changed in 2015 for children born on or after July 1st 2015 after the National Immunisation Advisory Committee (NIAC) recommended changing the meningococcal C (MenC) immunisation schedule in the primary childhood programme from three doses at 4, 6 and 13 months to two doses at 4 and 13 months because of evidence that a single dose of MenC vaccine provides protection for the first year of life. Please note the immunisation schedule changed in 2016 for children born on or after October 1st 2016. Please see the HSE-National Immunisation Office (NIO) website at www.immunisation.ie for current and detailed information on the Irish primary childhood immunisation schedule and also recommended vaccinations for older children and adults.

For children at 12 months of age in Quarter 3 2017, immunisation uptake rates of three doses of vaccines against diphtheria (D₃), pertussis (P₃), tetanus (T₃), *Haemophilus influenzae* type b (Hib₃), polio (Polio₃), hepatitis B (HepB₃), one dose of meningococcal serogroup C conjugate vaccine (MenC₁), two doses of pneumococcal conjugate vaccine (PCV₂) and one dose of BCG vaccine are reported.

For children at 24 months of age in Quarter 3 2017, immunisation uptake rates of three doses of vaccines against diphtheria (D₃), pertussis (P₃), tetanus (T₃), *Haemophilus influenzae* type b (Hib₃), polio (Polio₃), hepatitis B (HepB₃) and pneumococcal conjugate vaccine (PCV₃), two doses of vaccine against meningococcal group C (MenC₂) and one dose of vaccine against measles, mumps and rubella (MMR₁) are reported. One dose of vaccine against *Haemophilus influenzae* type b (Hib_b), one dose of meningococcal group C vaccine (MenC_b) and one dose of pneumococcal conjugate vaccine (PCV_b) given on or after 12 months of age are also reported.

The uptake statistics are also presented in this report by Community Healthcare Organisation (CHO) and Local Health Office (LHO). While there are 32 LHOs the immunisation uptake data for North Lee and South Lee are reported as a combined figure. The uptake rates presented here were rounded to zero decimal place.

Table 1. Primary childhood immunisation schedule for children born since 01/07/2015

| Age | Children born 01/07/2015 to 30/09/2016 | Children born from 01/10/2016 |
|-----------|--|--|
| Birth | BCG | BCG |
| 2 months | DTaP/Hib/IPV/HepB (6 in 1) + PCV | DTaP/Hib/IPV/HepB (6 in 1) + PCV+ MenB+ Rota |
| 4 months | DTaP/Hib/IPV/HepB (6 in 1) + MenC | DTaP/Hib/IPV/HepB (6 in 1) + MenB+ Rota |
| 6 months | DTaP/Hib/IPV/HepB (6 in 1) + PCV | DTaP/Hib/IPV/HepB (6 in 1) + PCV+ MenC |
| 12 months | MMR + PCV | MMR + MenB |
| 13 months | MenC + Hib | Hib/MenC+ PCV |

Please note the primary immunisation schedule changed in 2015 for children born on or after 01/07/2015 and changed in 2016 for children born on or after October 1st 2016. Please see the HSE-National Immunisation Office (NIO) website at www.immunisation.ie for current and detailed information on the Irish primary childhood immunisation schedule and also recommended vaccinations for older children and adults

| | |
|------|---|
| BCG | Bacille Calmette Guerin vaccine |
| DTaP | Diphtheria, Tetanus and acellular Pertussis vaccine |
| HepB | Hepatitis B vaccine |
| Hib | <i>Haemophilus influenzae</i> type b vaccine |
| IPV | Inactivated Polio Virus vaccine |
| MenB | Meningococcal group B vaccine |
| MenC | Meningococcal group C vaccine |
| MMR | Measles, Mumps and Rubella vaccine |
| PCV | Pneumococcal Conjugate Vaccine |
| Rota | Rotavirus oral vaccine |

Immunisation uptake among children at 12 months of age in Quarter 3-2017

National

- Immunisation uptake rates in children 12 months of age in Q3-2017 are presented by Community Healthcare Organisation (CHO) in table 2. National immunisation uptake rates were 90% for D₃, T₃, P₃, Hib₃, Polio₃, HepB₃ and PCV₂ and 94% for MenC₁.
- BCG vaccine stock in all areas expired at the end of April 2015. The HSE continues to experience ongoing delays with the supply of BCG vaccine. This continues to be a Europe wide issue. The number of cases of TB has been steadily falling in Ireland. The number of cases of TB for the years 2014 and 2015 was at the lowest level since records began. Most European countries do not give BCG vaccine to all babies. The National Immunisation Advisory Committee (NIAC), an independent expert group on immunisation and the Health Information and Quality Authority (HIQA) have both recommended that BCG vaccine does not now need to be given routinely to all babies in Ireland. So your baby is not at risk of TB and you do not need to delay any of your baby's injections
<http://www.hse.ie/eng/health/Immunisation/news/BCG17.html>
- Figure 1 presents the national uptake rates at 12 months for each vaccine from Q3-2000 to Q3-2017. Compared to Q2-2017, national uptake rates in Q3-2017 for D₃, T₃, P₃, Hib₃, Polio₃, HepB₃ and PCV₂ declined by 1% while MenC₁ was unchanged (figure 1).

Community Healthcare Organisation (CHO)

- Among the CHOs, the uptake rates for D₃, T₃, P₃, Hib₃, Polio₃ and HepB₃ ranged from 85% to 94%, MenC₁ ranged from 91% to 97% and PCV₂ ranged from 85% to 95%, (Table 2).

Local Health Office (LHO)

- The immunisation uptake rates by LHO are shown in appendix 1.
- D₃, MenC₁ and PCV₂ immunisation uptake rates are mapped by LHO in figures 2-4.
- The target uptake rate of 95% was reached in four LHOs for D₃, T₃, P₃, Hib₃, Polio₃ and HepB₃, five for PCV₂ and in 18 LHOs for MenC₁.

Table 2. Immunisation uptake (%) at 12 months in cohort born 01/07/2016–30/09/2016

| Community Healthcare Organisation/LHO* | No. in cohort [#] | BCG | D ₃ T ₃ | P ₃ | Hib ₃ | Polio ₃ | HepB ₃ | MenC ₁ | PCV ₂ |
|--|----------------------------|-------|-------------------------------|----------------|------------------|--------------------|-------------------|-------------------|------------------|
| CHO1 (CN/MN, DL, SO/LM) | 1314 | 0.0† | 93 | 93 | 93 | 93 | 93 | 95 | 93 |
| CHO2 (G, MO, RN) | 1538 | 0.0 | 94 | 94 | 94 | 94 | 94 | 97 | 95 |
| CHO3 (CE, L, TN) | 1272 | 0.0 | 91 | 91 | 91 | 91 | 91 | 95 | 91 |
| CHO4 (NC, NSL, WC, KY) | 2315 | 0.0 | 90 | 90 | 90 | 90 | 90 | 95 | 87 |
| CHO5 (CW/KK, TS, WD, WX) | 1732 | 0.2 | 90 | 90 | 90 | 90 | 90 | 95 | 90 |
| CHO6 (DS, DSE, WW) | 1244 | 0.0 | 92 | 92 | 92 | 92 | 92 | 95 | 92 |
| CHO7 (DSC, DSW, DW, KE) | 2656 | 0.1 | 88 | 88 | 88 | 88 | 88 | 94 | 88 |
| CHO8 (LS/OY, LD/WH, LH, MH) | 2298 | 0.0† | 91 | 91 | 91 | 91 | 91 | 94 | 91 |
| CHO9 (DNW, DNC, DN) | 2313 | 0.0 | 85 | 85 | 85 | 85 | 85 | 91 | 85 |
| Ireland | 16682† | 0.03† | 90 | 90 | 90 | 90 | 90 | 94 | 90 |

na = not available at this time

*Shown in brackets are the LHOs in each CHO. Please see Appendix 3 to translate LHO codes. The geographical boundaries of the CHOs are shown at http://www.hse.ie/eng/services/publications/corporate/CHO_Chapter_1.pdf

[#] The denominator/number in cohort varied slightly according to vaccine. D₃T₃ cohorts are shown here.

†Number in cohort for BCG is 14,980. BCG data are unavailable for the former HSE North Eastern Area i.e. CN/MN, LH, MH; therefore CHO1 and CHO8 BCG data are incomplete. At the time of writing of this report the HSE continues to experience on-going delays with the supply of BCG vaccine. This continues to be a Europe wide issue. See point 2 above regarding BCG vaccine stock in Ireland.

Immunisation uptake among children at 12 months of age in Quarter 3-2017

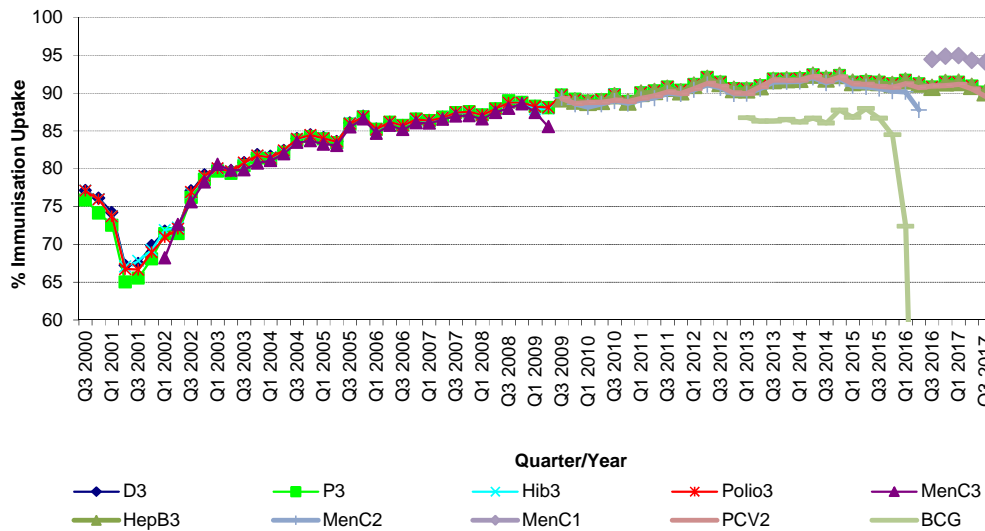


Figure 1. National quarterly immunisation uptake rates at 12 months

X-axis ranges from 60-100%.

Since T₃ uptake is identical to D₃ uptake only D₃ uptake figures presented. The Q3-2008 MenC₃ uptake figure is based on data from six of the eight HSE Areas. The Q1-2009 HSE-Eastern Area D₃, P₃, T₃, Polio₃ and MMR₁ uptake figures exclude those born on the 31/03/2007. The Q3-2009 figures are incomplete as two HSE Areas were unable to provide data, two additional areas were unable to provide MenC₂ data and one additional area was unable to provide PCV₂ data. The Q4-2009 figures are incomplete as three HSE Areas were unable to provide data. The Q1-2010 figures are incomplete as two HSE Areas were unable to provide data and three were unable to provide MenC₂ data. The Q2-2010 figures are incomplete as two HSE Areas were unable to provide data. The Q4-2010 figures are incomplete as one HSE Area was unable to provide data. BCG uptake data are only displayed in this graph from Q1 2013 as BCG uptake data were available for only five of the eight HSE-Areas (this includes data from the HSE-Southern Area which relates to Kerry data only) from Q3 2003 to Q2 2009 (except Q3 2004 when HSE-Southern Area data were not available), for three HSE-Areas in Q3 2009, for two HSE-Areas in Q4 2009, for three HSE-Areas in Q1 2010 and Q2 2010, for five HSE-Areas in Q4 2010, Q1 2011 and Q2 2011, for six HSE-Areas in Q3 2011 to Q4 2012 and for seven HSE Areas from Q1 2013. From Q3 2011 to Q3 2014 HSE Western Area BCG data was not available by LHO, uptake was provided for the HSE Western Area as a whole. In Q4 2014 BCG data was available for Galway and Roscommon- the BCG denominator for HSE Western Area in Q4 2014 was the sum of the Galway and Roscommon denominators. Since Q1 2015 BCG data was available for Galway, Mayo and Roscommon LHOs. See point 2 on the previous page regarding BCG vaccine stock in Ireland since April 2015.

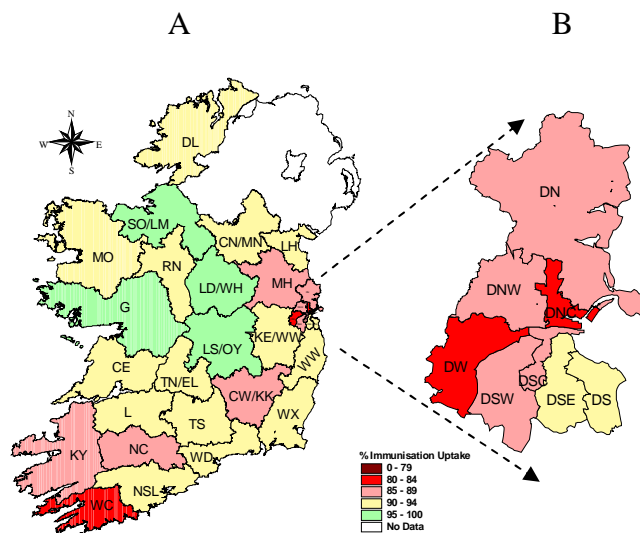


Figure 2. D₃ immunisation uptake rates (%) by LHO, in those 12 months of age in Quarter 3-2017, in (A) Ireland and (B) Dublin. Please see Appendix 3 to translate LHO codes.

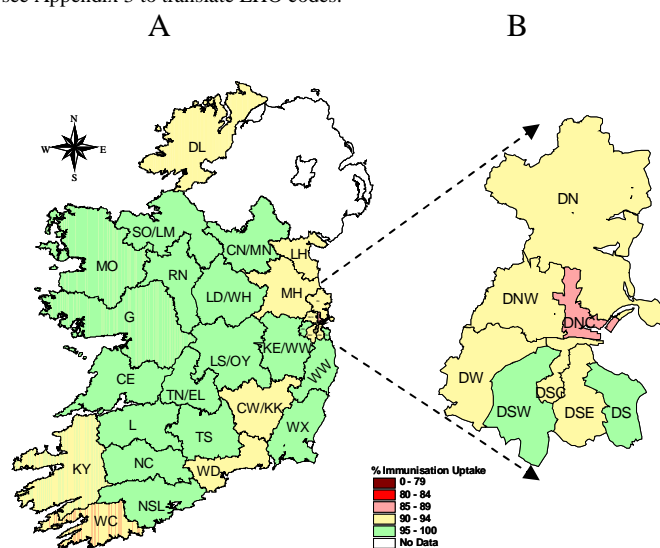


Figure 3. MenC₁ immunisation uptake rates (%) by LHO, in those 12 months of age in Quarter 3-2017, in (A) Ireland and (B) Dublin. Please see Appendix 3 to translate LHO codes.

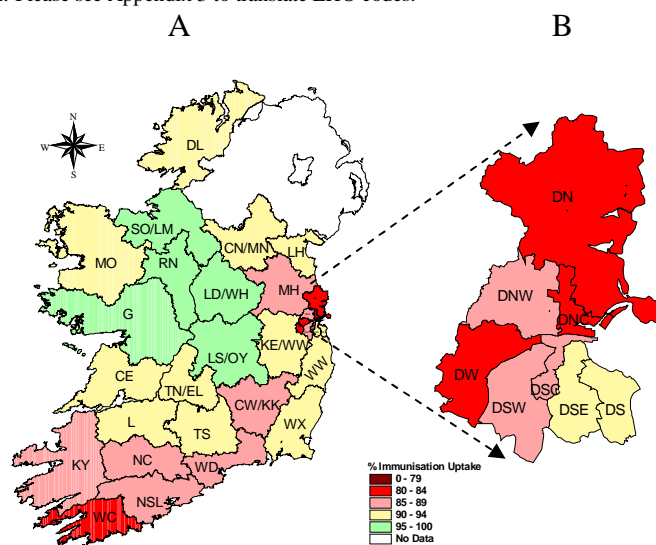


Figure 4. PCV₂ immunisation uptake rates (%) by LHO, in those 12 months of age in Quarter 3-2017, in (A) Ireland and (B) Dublin. Please see Appendix 3 to translate LHO codes.

Immunisation uptake among children 24 months of age in Quarter 3-2017

National

- The immunisation schedule changed in 2015 for children born on or after July 1st 2015 after the NIAC recommended changing the meningococcal C (MenC) immunisation schedule in the primary childhood programme from three doses at 4, 6 and 13 months to two doses at 4 and 13 months because of evidence that a single dose of MenC vaccine provides protection for the first year of life. Hence MenC₂ is now measured at 24 months of age. In previous quarters MenC₃ was measured at 24 months of age.
- National uptake rates were 95% for D₃, T₃, P₃, Hib₃, Polio₃ and HepB₃, 92% for MMR₁ and PCV_b, 91% for Hib_b and PCV₃, 88% for MenC_b and 86% for MenC₂ (table 3). Compared to the previous quarter national uptake rates in Q3-2017 increased by 1% for Hib_b, HepB₃ and PCV₃ and were unchanged for the remainder (figure 5).
- Figure 5 presents the national uptake rates at 24 months for each vaccine from Q1-1999 to Q3-2017.

Community Healthcare Organisations (CHOs)

- The target uptake of 95% was reached for D₃, P₃, T₃, Hib₃, Polio₃ and HepB₃ in six CHOs, in one for MenC_b, PCV_b and PCV₃ and in none for Hib_b, MenC₂ and MMR₁ (table 3).

Local Health Office (LHO)

- Immunisation uptake rates in children 24 months of age in Q3-2017 are presented by LHO in Appendix 2.
- D₃, Hib_b, MenC₃, MenC_b, PCV₃, PCV_b and MMR₁ immunisation uptake rates are mapped by LHO in figures 6-12.
- The target uptake of 95% was reached in 20 LHOs for D₃, T₃, P₃ and Hib₃, 19 for Polio₃, 18 for HepB₃, 9 for PCV_b, 6 for MMR₁, 5 for Hib_b, 4 for MenC_b, 3 for PCV₃ and 1 for MenC₂.

Table 3. Immunisation uptake (%) at 24 months in cohort born 01/07/2015–30/09/2015

| Community Healthcare Organisation/LHO | No. in Cohort* | D ₃ /T ₃ /P ₃ /Polio ₃ | Hib ₃ | Hib _b | HepB ₃ | MenC ₂ | MenC _b | PCV ₃ | PCV _b | MMR ₁ |
|---------------------------------------|----------------|--|------------------|------------------|-------------------|-------------------|-------------------|------------------|------------------|------------------|
| CHO1 (CN/MN, DL, SO/LM) | 1418 | 95 | 95 | 90 | 95 | 83 | 83 | 89 | 93 | 93 |
| CHO2 (G, MO, RN) | 1501 | 97 | 97 | 94 | 97 | 93 | 95 | 97 | 95 | 94 |
| CHO3 (CE, L, TN) | 1321 | 95 | 95 | 92 | 95 | 89 | 89 | 92 | 90 | 93 |
| CHO4 (NC, NSL, WC, KY) | 2490 | 96 | 96 | 93 | 96 | 89 | 90 | 91 | 94 | 93 |
| CHO5 (CW/KK, TS, WD, WX) | 1829 | 96 | 96 | 90 | 95 | 87 | 88 | 92 | 94 | 94 |
| CHO6 (DS, DSE, WW) | 1322 | 92 | 92 | 89 | 92 | 86 | 87 | 90 | 91 | 91 |
| CHO7 (DSC, DSW, DW, KE) | 2711 | 94 | 94 | 90 | 94 | 87 | 88 | 90 | 92 | 92 |
| CHO8 (LS/OY, LD/WH, LH, MH) | 2423 | 95 | 95 | 91 | 95 | 82 | 85 | 88 | 91 | 92 |
| CHO9 (DNW, DNC, DN) | 2384 | 92 | 92 | 87 | 91 | 84 | 85 | 88 | 89 | 89 |
| Ireland | 17409 | 95 | 95 | 91 | 95 | 86 | 88 | 91 | 92 | 92 |

Please see Appendix 3 to translate LHO codes
na = not available

* As the denominator/number in cohort varied slightly according to vaccine D₃T₃ cohorts are shown here

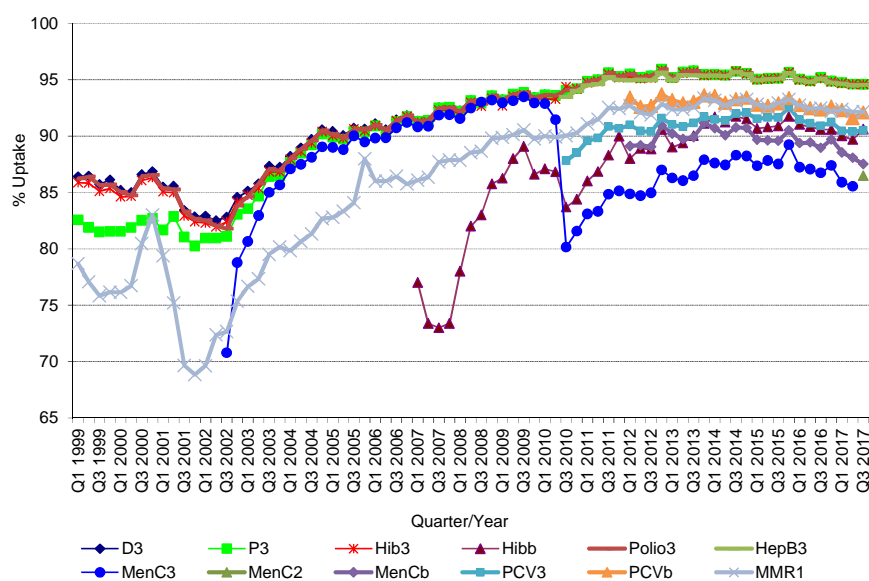


Figure 5. National quarterly immunisation uptake rates at 24 months

Notes: The Q4-2005 MMR₁ figure is based on data from seven of the eight HSE-Areas. The Q1-2006 MMR₁ figure includes the HSE-Eastern Area figure that is an estimate only. The Q1-2007, Q3-2007, Q2-2008 and Q3-2008 Hib_b figures are based on data from seven of the eight HSE Areas. In Q1-2008 the HSE-SE changed their Hib_b data extraction method compared to previous quarters; in Q1-2008 the uptake of Hib_b in the HSE-SE was 83% compared to 53% in Q4-2007. The Q3-2008 MenC₃ figure is based on data from six of the eight HSE Areas. The Q1-2009 HSE-Eastern Area D₃, P₃, T₃, Polio₃ and MMR₁ uptake figures exclude those born on the 31/03/2007. The Q2-2009 HSE-Eastern Area Hib_b uptake figures exclude uptake figures from Dublin North. The Q4-2009 figures are based on data from seven of the eight HSE Areas. The Q4-2009 Hib_b figures also exclude uptake figures from Dublin North. The Q1-2010 figures are based on data from six of the eight HSE Areas. The Q1-2010 Hib_b figures also exclude uptake figures from Dublin North. The Q2-2010 and Q4-2010 figures are based on data from seven of the eight HSE Areas. MenC_b and PCV_b data were only available for 6 of the 8 HSE Areas from Q1 2012 to Q4 2014. MenC_b and PCV_b data were only available for 8 CHOs from Q1 2015-Q1 2017 but are available for all since Q2 2017. Q2 2017 CHO3 Hib_b figures were unavailable.

Conclusions

In Quarter 3-2017, national uptake rates at 24 months for D₃, T₃, P₃, Hib₃, Polio₃ and HepB₃ reached the target of 95%. Uptake of the remaining vaccines are lower; doses of these remaining vaccines are given at 12 and 13 months of age suggesting that parents are less likely to get the necessary vaccines for their children at this age. Uptake of Hib_b, HepB₃ and PCV₃ increased by one percent in Quarter 3-2017 compared to the previous quarter.

Acknowledgements

HPSC would like to thank all those involved in childhood immunisation including the General Practitioners, Practice Nurses, HSE Areas, Public Health Nurses, Immunisation Co-ordinators, Specialists in Public Health Medicine, Surveillance Scientists and Systems Analysts for their assistance.

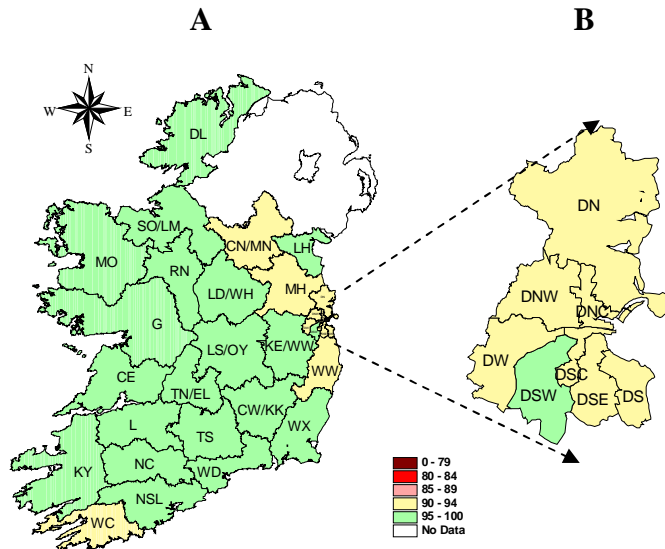


Figure 6. D₃ immunisation uptake rates (%) by LHO, in those 24 months of age in Quarter 3-2017, in (A) Ireland and (B) Dublin. Please see Appendix 3 to translate LHO codes.

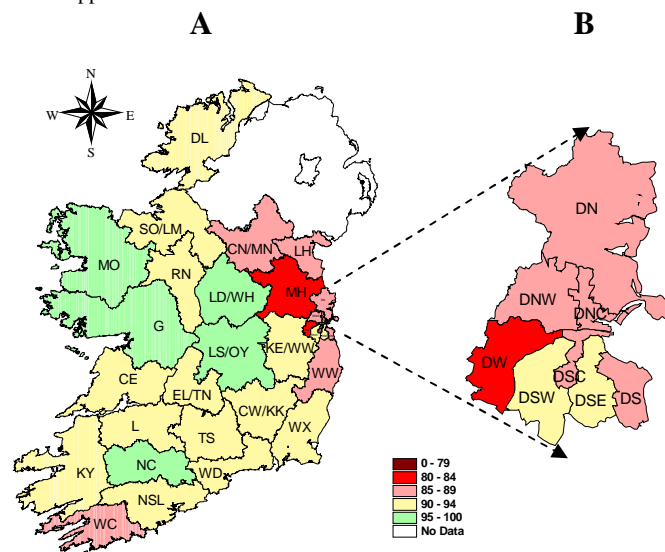


Figure 7. Hib₆ immunisation uptake rates (%) by LHO, in those 24 months of age in Quarter 3-2017, in (A) Ireland and (B) Dublin. Please see Appendix 3 to translate LHO codes.

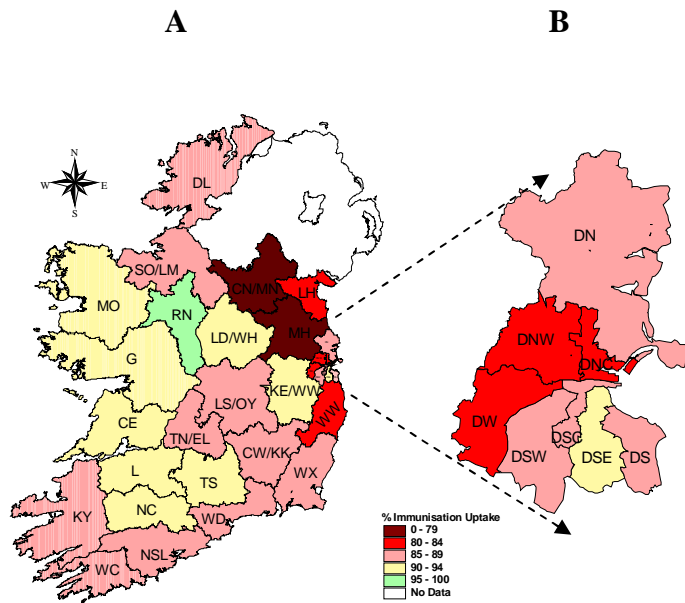


Figure 8. MenC₂ immunisation uptake rates (%) by LHO, in those 24 months of age in Quarter 3-2017, in (A) Ireland and (B) Dublin. Please see Appendix 3 to translate LHO codes.

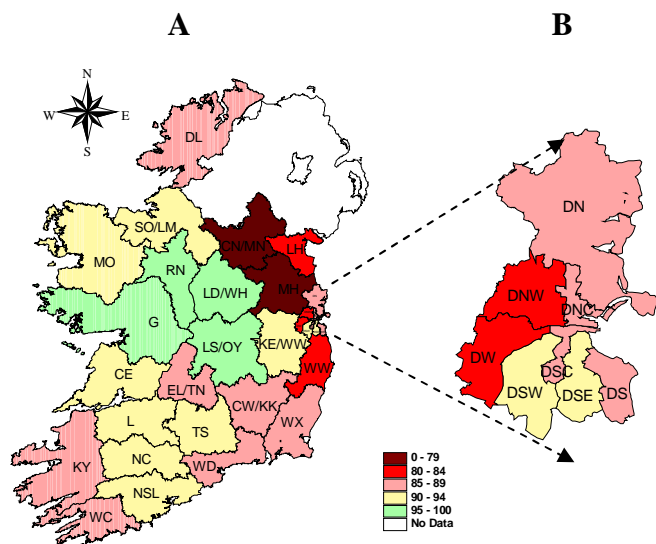


Figure 9. MenC_b immunisation uptake rates (%) by LHO, in those 24 months of age in Quarter 3-2017, in (A) Ireland and (B) Dublin. Please see Appendix 3 to translate LHO codes.

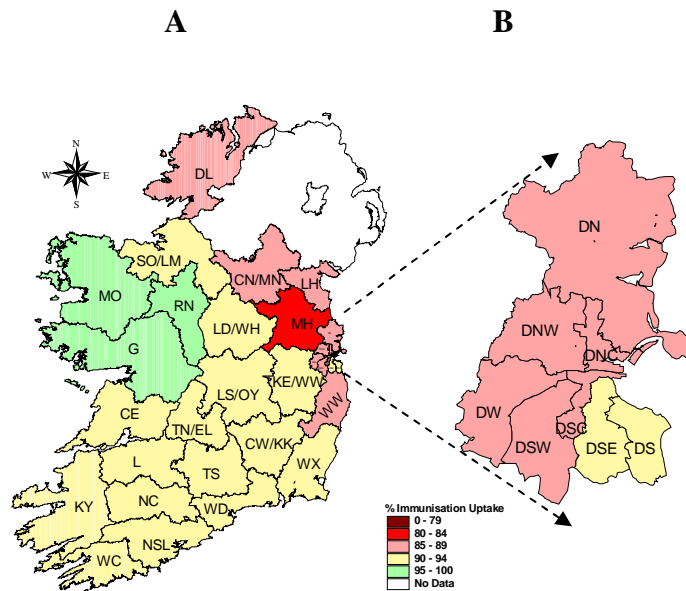


Figure 10. PCV₃ immunisation uptake rates (%) by LHO, in those 24 months of age in Quarter 3-2017, in (A) Ireland and (B) Dublin. Please see Appendix 3 to translate LHO codes.

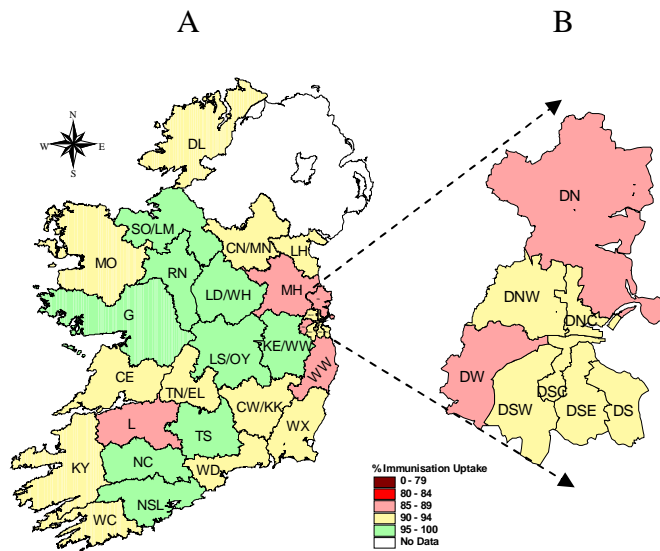


Figure 11. PCV₆ immunisation uptake rates (%) by LHO, in those 24 months of age in Quarter 3-2017, in (A) Ireland and (B) Dublin. Please see Appendix 3 to translate LHO codes.

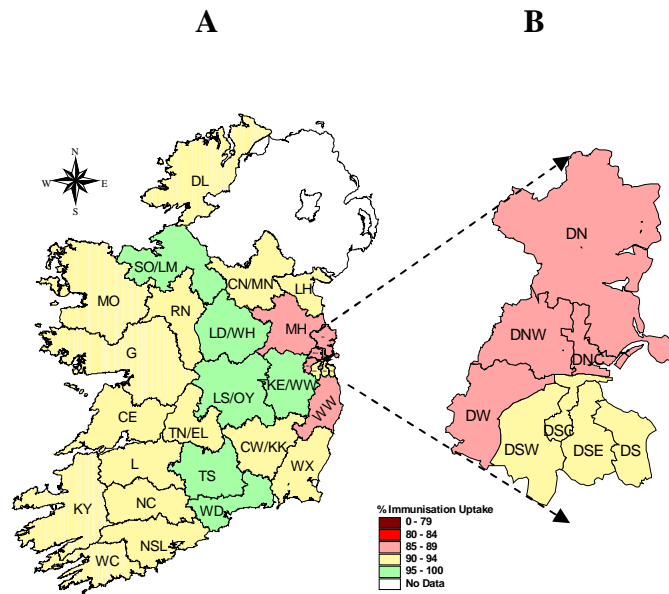


Figure 12. MMR₁ immunisation uptake rates (%) by LHO, in those 24 months of age in Quarter 3-2017, in (A) Ireland and (B) Dublin. Please see Appendix 3 to translate LHO codes.

Appendix 1

| Immunisation uptake (%) at 12 months of age in cohort born 01/07/2016-30/09/2016 | | | | | | | | | | | | |
|--|----------------------------|------------------------|---|-------------------------|-------------------------------|----------------|------------------|--------------------|-------------------|-------------------|------------------|-----------|
| Community Healthcare Organisation (CHO) | LHO/CHO | No. in cohort for BCG* | No. in cohort for D ₃ T ₃ # | Immunisation Uptake (%) | | | | | | | | |
| | | | | BCG* | D ₃ T ₃ | P ₃ | Hib ₃ | Polio ₃ | HepB ₃ | MenC ₁ | PCV ₂ | |
| CHO1 | Cavan/Monaghan | na | 479 | na | 93 | 93 | 93 | 93 | 93 | 95 | 93 | |
| | Donegal | 521 | 521 | 0.0 | 91 | 91 | 91 | 91 | 91 | 89 | 93 | |
| | Sligo/Leitrim | 314 | 314 | 0.0 | 97 | 97 | 97 | 97 | 97 | 97 | 98 | |
| | CHO1 Total* | 835 | 1314 | 0.0 | 93 | 93 | 93 | 93 | 93 | 93 | 95 | 93 |
| CHO2 | Galway | 915 | 915 | 0.0 | 95 | 95 | 95 | 95 | 95 | 95 | 97 | |
| | Mayo | 412 | 412 | 0.0 | 94 | 94 | 94 | 94 | 94 | 94 | 96 | |
| | Roscommon | 211 | 211 | 0.0 | 94 | 94 | 94 | 94 | 94 | 94 | 97 | |
| | CHO2 Total | 1538 | 1538 | 0.0 | 94 | 94 | 94 | 94 | 94 | 94 | 97 | 95 |
| CHO3 | Clare | 383 | 383 | 0.0 | 93 | 93 | 93 | 93 | 93 | 92 | 95 | |
| | Limerick | 475 | 475 | 0.0 | 91 | 91 | 91 | 91 | 91 | 91 | 95 | |
| | Tipperary NR/East Limerick | 414 | 414 | 0.0 | 90 | 90 | 90 | 90 | 90 | 90 | 96 | |
| | CHO3 Total | 1272 | 1272 | 0.0 | 91 | 91 | 91 | 91 | 91 | 91 | 95 | 91 |
| CHO4 | North Cork | 338 | 338 | 0.0 | 88 | 88 | 88 | 88 | 88 | 88 | 97 | |
| | North South Lee | 1336 | 1320 | 0.0 | 91 | 91 | 91 | 91 | 91 | 91 | 95 | |
| | West Cork | 169 | 172 | 0.0 | 83 | 83 | 83 | 83 | 83 | 83 | 91 | |
| | Kerry | 491 | 485 | 0.0 | 89 | 89 | 89 | 89 | 89 | 89 | 94 | |
| | CHO4 Total | 2334 | 2315 | 0.0 | 90 | 90 | 90 | 90 | 90 | 90 | 95 | 87 |
| CHO5 | Carlow/Kilkenny | 477 | 477 | 0.0 | 89 | 89 | 89 | 89 | 89 | 89 | 93 | |
| | South Tipperary | 316 | 316 | 0.3 | 93 | 93 | 93 | 93 | 93 | 93 | 97 | |
| | Waterford | 442 | 442 | 0.5 | 90 | 90 | 90 | 90 | 90 | 90 | 94 | |
| | Wexford | 497 | 497 | 0.0 | 91 | 91 | 91 | 91 | 91 | 91 | 95 | |
| | CHO5 Total | 1732 | 1732 | 0.2 | 90 | 90 | 90 | 90 | 90 | 90 | 95 | 90 |
| CHO6 | Dublin South | 386 | 386 | 0.0 | 92 | 92 | 92 | 92 | 92 | 92 | 97 | |
| | Dublin South East | 422 | 422 | 0.0 | 92 | 92 | 92 | 92 | 92 | 92 | 94 | |
| | Wicklow | 436 | 436 | 0.0 | 92 | 92 | 92 | 92 | 92 | 92 | 96 | |
| | CHO6 Total | 1244 | 1244 | 0.0 | 92 | 92 | 92 | 92 | 92 | 92 | 95 | 92 |
| CHO7 | Dublin South City | 430 | 430 | 0.2 | 87 | 87 | 87 | 87 | 87 | 87 | 93 | |
| | Dublin South West | 664 | 664 | 0.0 | 89 | 89 | 89 | 89 | 89 | 89 | 95 | |
| | Dublin West | 637 | 637 | 0.2 | 84 | 84 | 84 | 84 | 84 | 84 | 91 | |
| | Kildare/West Wicklow | 925 | 925 | 0.0 | 92 | 92 | 92 | 92 | 92 | 92 | 95 | |
| | CHO7 Total | 2656 | 2656 | 0.1 | 88 | 88 | 88 | 88 | 88 | 88 | 94 | 88 |
| CHO8 | Laois/Offaly | 592 | 592 | 0.0 | 95 | 95 | 95 | 95 | 95 | 95 | 95 | |
| | Longford/Westmeath | 464 | 464 | 0.0 | 95 | 95 | 95 | 95 | 95 | 95 | 95 | |
| | Louth | na | 460 | na | 90 | 90 | 90 | 90 | 90 | 90 | 94 | |
| | Meath | na | 782 | na | 86 | 86 | 86 | 86 | 86 | 86 | 92 | |
| | CHO8 Total* | 1056 | 2298 | 0.0 | 91 | 91 | 91 | 91 | 91 | 91 | 94 | 91 |
| CHO9 | Dublin North West | 881 | 881 | 0.0 | 86 | 86 | 86 | 86 | 86 | 86 | 91 | |
| | Dublin North Central | 457 | 457 | 0.0 | 84 | 84 | 84 | 84 | 84 | 84 | 89 | |
| | Dublin North | 975 | 975 | 0.0 | 85 | 85 | 85 | 85 | 85 | 85 | 90 | |
| | CHO9 Total | 2313 | 2313 | 0.0 | 85 | 85 | 85 | 85 | 85 | 85 | 91 | 85 |
| Ireland * | | 14980 | 16682 | 0.03 | 90 | 90 | 90 | 90 | 90 | 90 | 94 | 90 |

na=not available

*BCG data were unavailable for Cavan/Monaghan, Louth and Meath

• BCG vaccine stock in all areas expired at the end of April 2015. The HSE continues to experience ongoing delays with the supply of BCG vaccine. This continues to be a Europe wide issue. The number of cases of TB has been steadily falling in Ireland. The number of cases of TB for the years 2014 and 2015 was at the lowest level since records began. Most European countries do not give BCG vaccine to all babies. The National Immunisation Advisory Committee (NIAC), an independent expert group on immunisation and the Health Information and Quality Authority (HIQA) have both recommended that BCG vaccine does not now need to be given routinely to all babies in Ireland. So your baby is not at risk of TB and you do not need to delay any of your baby's injections http://www.hse.ie/eng/health/immunisation/new_s/BCG17.html

#The denominator/number in cohort varied slightly according to vaccine. D₃T₃ cohort shown here.

Please note while North Lee and South Lee are two separate LHOs their combined immunisation uptake data are reported here.

Appendix 2

| Immunisation uptake (%) at 24 months of age in cohort born 01/07/2015-30/09/2015 | | | | | | | | | | | | | |
|--|----------------------------|---|-------------------------------|----------------|------------------|------------------|--------------------|-------------------|-------------------|-------------------|------------------|------------------|------------------|
| Community Healthcare Organisation (CHO) | LHO/CHO | No. in cohort for D ₃ T ₃ * | Immunisation Uptake (%) | | | | | | | | | | |
| | | | D ₃ T ₃ | P ₃ | Hib ₃ | Hib _b | Polio ₃ | HepB ₃ | MenC ₂ | MenC _b | PCV ₃ | PCV _b | MMR ₁ |
| CHO1 | Cavan/Monaghan | 531 | 94 | 94 | 94 | 89 | 94 | 94 | 74 | 73 | 89 | 91 | 93 |
| | Donegal | 547 | 95 | 95 | 95 | 90 | 95 | 94 | 87 | 88 | 88 | 93 | 91 |
| | Sligo/Leitrim | 340 | 97 | 97 | 97 | 94 | 97 | 97 | 89 | 92 | 91 | 96 | 96 |
| | CHO1 Total | 1418 | 95 | 95 | 95 | 90 | 95 | 95 | 83 | 83 | 89 | 93 | 93 |
| CHO2 | Galway | 883 | 97 | 97 | 97 | 95 | 97 | 97 | 93 | 95 | 98 | 95 | 94 |
| | Mayo | 419 | 96 | 96 | 96 | 95 | 96 | 96 | 92 | 93 | 97 | 93 | 92 |
| | Roscommon | 199 | 96 | 96 | 96 | 93 | 96 | 96 | 96 | 96 | 95 | 96 | 94 |
| | CHO2 Total | 1501 | 97 | 97 | 97 | 94 | 97 | 97 | 93 | 95 | 97 | 95 | 94 |
| CHO3 | Clare | 400 | 96 | 96 | 96 | 93 | 96 | 96 | 91 | 90 | 93 | 92 | 94 |
| | Limerick | 483 | 95 | 95 | 95 | 93 | 95 | 95 | 90 | 90 | 90 | 88 | 90 |
| | Tipperary NR/East Limerick | 438 | 95 | 95 | 95 | 90 | 95 | 95 | 87 | 87 | 93 | 91 | 93 |
| | CHO3 Total | 1321 | 95 | 95 | 95 | 92 | 95 | 95 | 89 | 89 | 92 | 90 | 93 |
| CHO4 | North Cork | 395 | 97 | 97 | 97 | 95 | 97 | 97 | 90 | 90 | 92 | 95 | 94 |
| | North South Lee | 1472 | 96 | 96 | 96 | 94 | 96 | 96 | 89 | 91 | 91 | 95 | 94 |
| | West Cork | 176 | 93 | 93 | 93 | 88 | 93 | 93 | 87 | 85 | 92 | 91 | 90 |
| | Kerry | 447 | 96 | 96 | 96 | 93 | 96 | 96 | 87 | 88 | 91 | 93 | 93 |
| CHO4 Total | 2490 | 96 | 96 | 96 | 93 | 96 | 96 | 89 | 90 | 91 | 94 | 93 | |
| CHO5 | Carlow/Kilkenny | 460 | 96 | 96 | 96 | 90 | 96 | 96 | 85 | 87 | 90 | 93 | 93 |
| | South Tipperary | 336 | 97 | 97 | 97 | 90 | 97 | 96 | 90 | 90 | 94 | 96 | 95 |
| | Waterford | 468 | 96 | 96 | 96 | 90 | 96 | 96 | 88 | 89 | 93 | 94 | 95 |
| | Wexford | 565 | 95 | 95 | 95 | 91 | 94 | 94 | 86 | 88 | 91 | 94 | 93 |
| CHO5 Total | 1829 | 96 | 96 | 96 | 90 | 96 | 95 | 87 | 88 | 92 | 94 | 94 | |
| CHO6 | Dublin South | 425 | 93 | 93 | 93 | 89 | 93 | 93 | 86 | 87 | 91 | 91 | 91 |
| | Dublin South East | 429 | 94 | 94 | 94 | 92 | 94 | 94 | 90 | 91 | 91 | 93 | 94 |
| | Wicklow | 478 | 90 | 90 | 90 | 86 | 90 | 90 | 83 | 83 | 88 | 89 | 89 |
| | CHO6 Total | 1332 | 92 | 92 | 92 | 89 | 92 | 92 | 86 | 87 | 90 | 91 | 91 |
| CHO7 | Dublin South City | 433 | 94 | 94 | 94 | 89 | 94 | 94 | 86 | 86 | 89 | 91 | 91 |
| | Dublin South West | 664 | 95 | 95 | 95 | 92 | 95 | 95 | 88 | 90 | 89 | 93 | 93 |
| | Dublin West | 651 | 92 | 92 | 92 | 83 | 92 | 92 | 80 | 81 | 88 | 89 | 89 |
| | Kildare/West Wicklow | 963 | 95 | 95 | 95 | 93 | 95 | 95 | 91 | 91 | 93 | 95 | 95 |
| CHO7 Total | 2711 | 94 | 94 | 94 | 90 | 94 | 94 | 87 | 88 | 90 | 92 | 92 | |
| CHO8 | Laos/Offaly | 637 | 96 | 96 | 96 | 96 | 96 | 96 | 89 | 96 | 92 | 95 | 95 |
| | Longford/Westmeath | 510 | 98 | 98 | 98 | 98 | 98 | 98 | 93 | 96 | 93 | 96 | 96 |
| | Louth | 474 | 95 | 95 | 95 | 88 | 95 | 95 | 80 | 80 | 87 | 91 | 91 |
| | Meath | 802 | 92 | 92 | 92 | 83 | 92 | 92 | 72 | 72 | 84 | 85 | 88 |
| CHO8 Total | 2423 | 95 | 95 | 95 | 91 | 95 | 95 | 82 | 85 | 88 | 91 | 92 | |
| CHO9 | Dublin North West | 881 | 92 | 92 | 92 | 87 | 92 | 92 | 83 | 84 | 87 | 90 | 88 |
| | Dublin North Central | 469 | 92 | 92 | 92 | 89 | 92 | 92 | 84 | 85 | 89 | 91 | 88 |
| | Dublin North | 1034 | 91 | 91 | 91 | 86 | 91 | 91 | 85 | 85 | 88 | 88 | 89 |
| | CHO9 Total | 2384 | 92 | 92 | 92 | 87 | 92 | 91 | 84 | 85 | 88 | 89 | 89 |
| Ireland | 17409 | 95 | 95 | 95 | 91 | 95 | 95 | 86 | 88 | 91 | 92 | 92 | |

na=not available

*The denominator/number in cohort varied slightly according to vaccine. D₃T₃ cohorts show n here.

Please note while North Lee and South Lee are two separate LHOs their combined immunisation uptake data are reported here.

Appendix 3

| Local Health Office (LHO) Abbreviations (used in maps in this report) | Local Health Office (LHO) |
|--|--------------------------------|
| CE | Clare |
| CN/MN | Cavan/Monaghan |
| CW/KK | Carlow/Kilkenny |
| DL | Donegal |
| DN | Dublin North |
| DNC | Dublin North Central |
| DNW | Dublin North West |
| DS | Dublin South |
| DSC | Dublin South City |
| DSE | Dublin South East |
| DSW | Dublin South West |
| DW | Dublin West |
| G | Galway |
| KE/WW | Kildare/West Wicklow |
| KY | Kerry |
| L | Limerick |
| LD/WD | Longford/Westmeath |
| LH | Louth |
| LS/OY | Laois/Offaly |
| MH | Meath |
| MO | Mayo |
| NC | North Cork |
| NSL* | North South Lee* |
| RN | Roscommon |
| SO/LM | Sligo/Leitrim |
| TN/EL | Tipperary North /East Limerick |
| TS | South Tipperary |
| WC | West Cork |
| WD | Waterford |
| WX | Wexford |
| WW | Wicklow |

*Please note while North Lee and South Lee are two separate LHOs their combined immunisation uptake data are reported here